

Section
(scale 1:10)

Xonar® 942 Chain Driven motor type and size to suit duty cycle requirements

Xonar® 942 endplate, face fixed to structure

Xonar® 942 bottom rail protrudes 90mm when shutter is in fully raised position

Substrate to match certification requirement (Refer to installation configuration table)

Outside - attack face

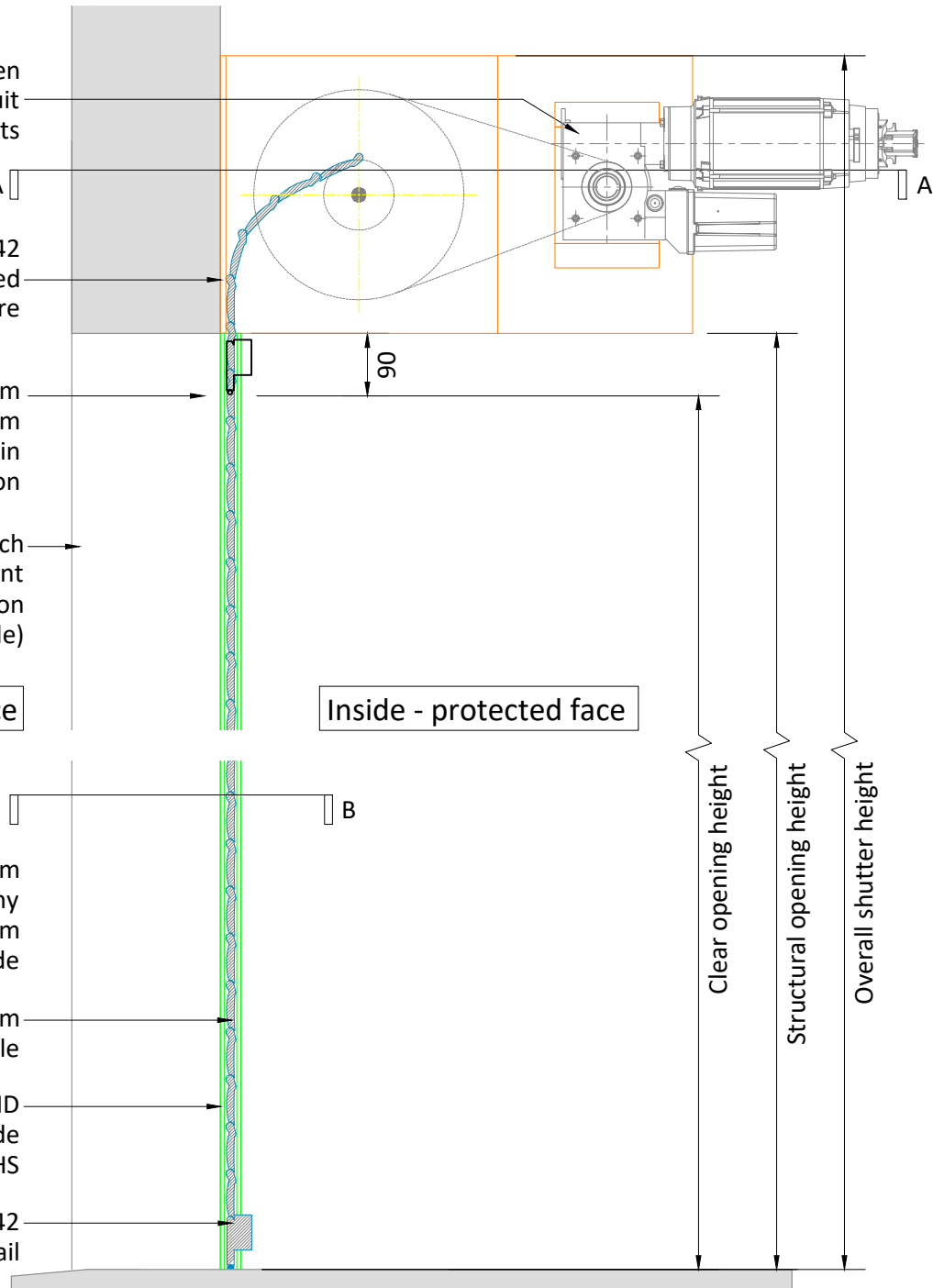
Inside - protected face

Note: minimum 40mm clearance to any protrusion from internal face of guide

Xonar® 942 65mm self-locking lath profile

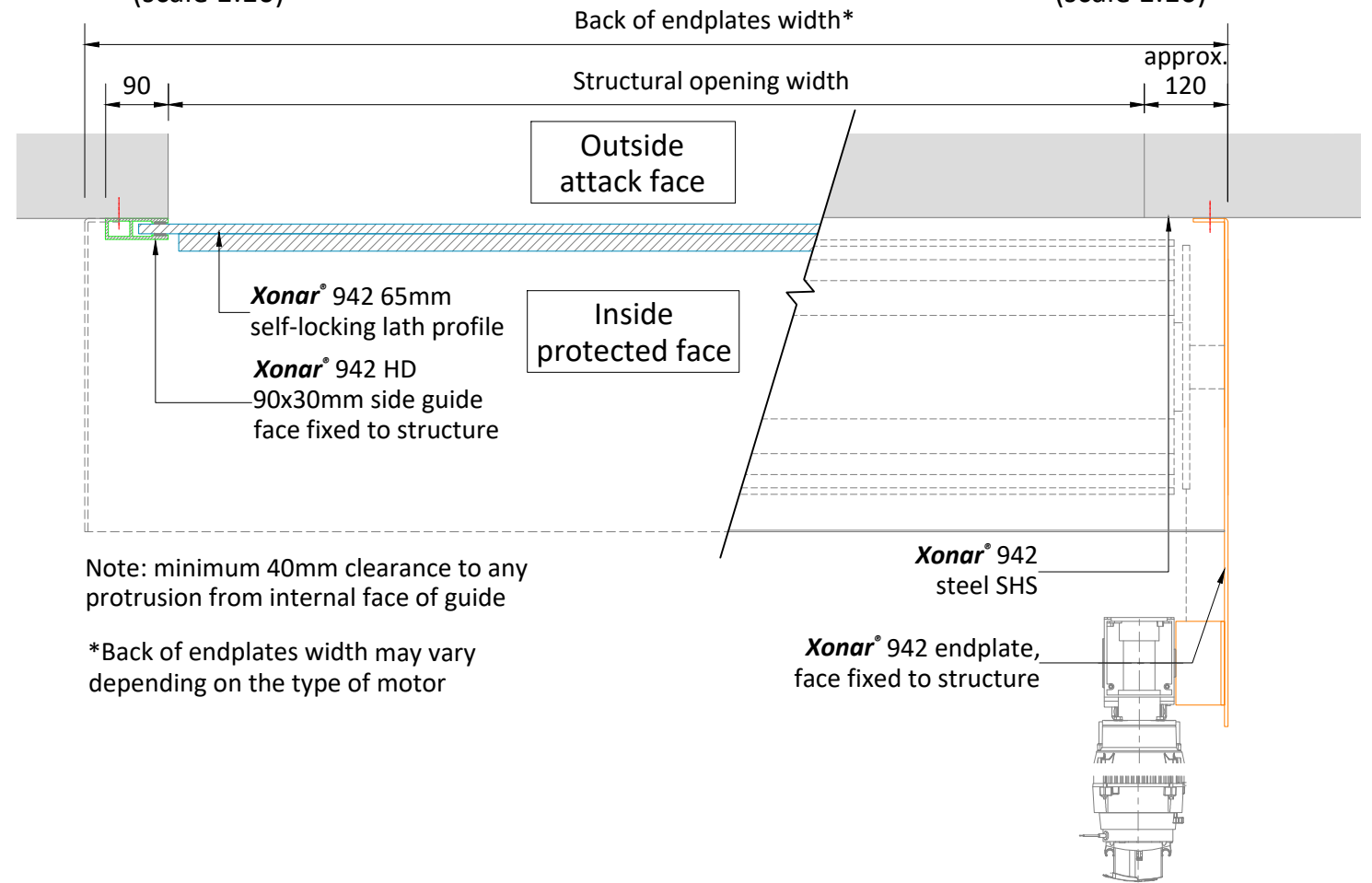
Xonar® 942 HD 90x30mm side guide face fixed to steel SHS

Xonar® 942 bottom rail



Plan Through: B-B
(scale 1:10)

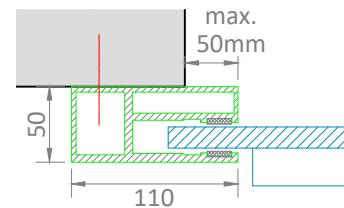
Plan Through: A-A
(scale 1:10)



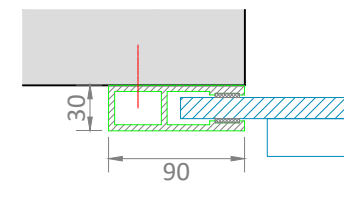
Note: minimum 40mm clearance to any protrusion from internal face of guide

*Back of endplates width may vary depending on the type of motor

Xonar® 942-CDM guide options:
(scale 1:5)

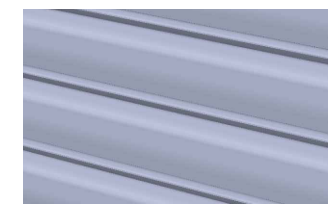


Xonar® 942 110x50 HD guide
(BS EN 12424, Wind load performance up to Class 5)

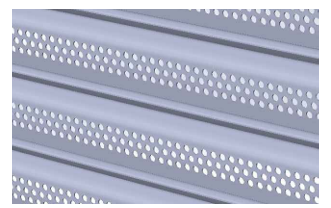


Xonar® 942 90x30 HD guide
(BS EN 12424, Wind load performance up to Class 2)

Xonar® 942-CDM curtain options:
(scale NTS)



Xonar® 942
Solid 65mm self-locking lath profile



Xonar® 942-P2
Perforated 65mm self-locking lath profile

NOTE: The installation shall be direct to the substrate and not via intermediate substrates, such as plasterboard

Installation Configurations				
Configuration	Substrate			
Xonar® 942 Internally face fitted roller shutter	Brickwork	Blockwork	Concrete	3mm Structural Steelwork or greater
	✓	✓	✓	✓

Xonar® 942-CDM Specialist Roller Shutter System

Curtain	Guide	Security Rating	Minimum structural opening width (m)	Maximum structural opening width (m)	Minimum structural opening height (m)	Maximum structural opening height (m)
Xonar® 942	90x30mm	B3	0.6	4	1	10
Xonar® 942	110x50mm	B3	0.6	8	1	10
Xonar® 942-P2	90x30mm	B3	0.6	4	1	10
Xonar® 942-P2	110x50mm	B3	0.6	8	1	10



ROLLING INNOVATION

CGT SECURITY LTD - 1 DARWIN CLOSE - READING - BERKS - RG2 0TB
T: 0330 024 9409 / WWW.CGTSECURITY.COM / SALES@CGTSECURITY.COM

REVISIONS:
A - Initial Issue - 06/02/2025 - BM
C - layout updated - 13/02/2026 - BM

NOTES:
1.This drawing is copyright of CGT Security Ltd and must not be reproduced whole or in part without prior written consent.
2.The approval of these drawings constitutes acceptance of the specification as outlined, superseding previous specifications within tender documentation or drawings

DRAWN BY:
BM

CHECKED BY:
-

APPROVED BY:
RM

PROJECT:
Xonar® Standard Drawing Library

DRAWING TITLE:
Working drawing - Xonar® 942-CDM Security Shutter Details

SCALE:
1:10 & 1:5 @ A3

PROJECT NO:
CSDL

DRAWING NO:
L5534 B