

INTIMIDATOR

HIGH PERFORMANCE INDUSTRIAL DOORS

INTIMIDATOR INDUSTRIAL DOOR TICKS ALL THE SPECIFICATION REQUIREMENTS

Product: Intimidator IR2

Promoted as Reading's newest destination and based directly outside the main entrance to Reading train station for ultra-easy connectivity, is a new, design-led development called Station Hill. The six and a half acre site is one of the largest development schemes outside of London.



Combining leisure facilities, restaurants, premier office space and residential dwellings, Station Hill is designed to be a vibrant mixed-use space fostering a "live-work-play" environment and is a project between the joint venture company, Lincoln MGT and Reading Borough Council.



A Demanding Specification for Secure Parking

Creating this type of neighbourhood hub inevitably means new parking areas are required too – and as space is always at a premium with such developments, the car park is an underground area with a specification calling for 25% free open air shutters with a LPS 1175 SR2 security rating and a large opening width of over 7 metres.



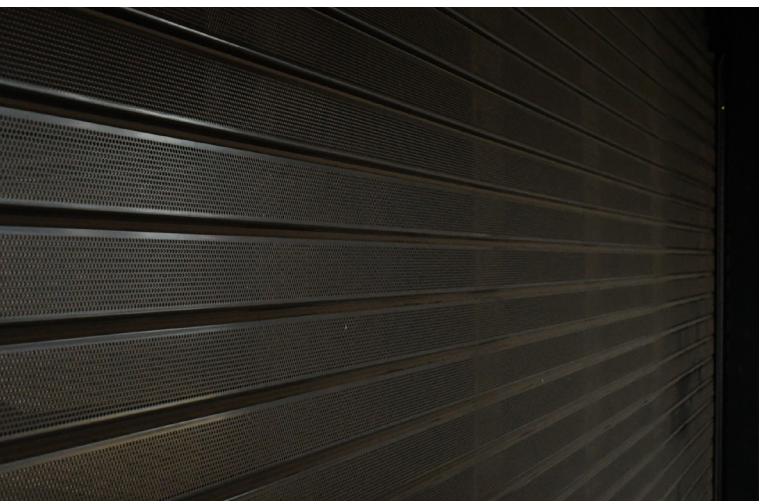
INTIMIDATOR

HIGH PERFORMANCE INDUSTRIAL DOORS

Few Solutions for This Specification

Whilst perforated shutters to give free air circulation are not unusual, combining the security rating with the large opening area is a more specific combination, with few manufacturers that are able to meet these criteria.

The Intimidator industrial shutter range manufactured by CGT Security, is a collection of high performance shutters with LPS 1175 Issue 8 certified security levels up to and including D10 (SR4) and is also available in larger widths.



The Intimidator IR2 is available in aluminium, stainless steel and galvanised steel with perforations, and can span an opening of up to 8 metres.

This made it an ideal choice for both the loading bay shutter as well as the Car Park shutter, as these both had widths of over 7m.

The Intimidator products are also available with a choice of locking options and in this case the client chose solenoid locking.

Being an iconic development for the area, the architects involved also wanted to ensure that the shutter would not detract from the appearance of their design, and as the Intimidator offers attractive styling and was matched to their specific RAL 7021 colour with a satin finish, this gave them exactly the aesthetic that they were looking to achieve.