

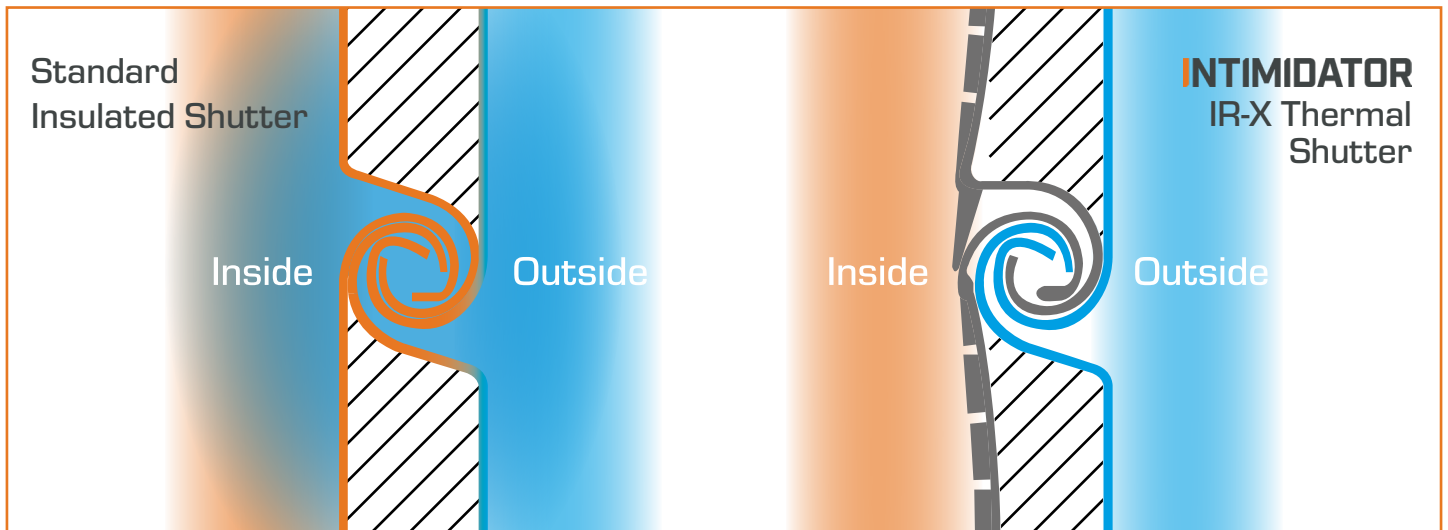
IR-X DATA SHEET

INTIMIDATOR[®]

HIGH PERFORMANCE INDUSTRIAL DOORS

A1 (SR1) B3 (SR2)

LPS 1175 CERTIFIED INDUSTRIAL DOORS



ACCREDITATIONS

- Independently tested by the Loss Prevention Certification Board (LPCB)
- Certified to LPS 1175 Issue 8, A1 (SR1) & B3 (SR2)
- Secured by Design Police Preferred Accreditation
- Certified up to BS EN 12424 Class 5 (1050Pa). Equivalent to 92mph/148 kmh.

TYPICAL APPLICATIONS

- Suitable for secure, high speed industrial doors where low noise levels and good insulation are important
- Warehouses
- Production Facilities
- Logistics Depots
- Utilities Buildings

SPECIAL FEATURES

- Patented thermal break technology removes the cold bridge through the joint. This ensures a higher thermal performance than standard insulated shutters
- Higher all-round thermal and acoustic performance of whole shutter
- Top profile of shutter has rubber seal to reduce cold airflow into building
- Basic through-slat U value of 1.22W/m²K (excluding additional reduction due to thermal break technology)
- Patented curved lath design for more intelligent shutter rolling
- Rubber seals on guide rails ensure noise reduction when operating plus additional thermal protection
- Two part guide rail gives reinforcement for high wind-loading and gives extra strength on attack face
- Low wear and tear due to insulator strips reducing metal-on-metal contact

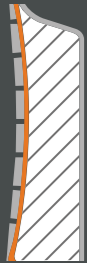
 **CGT security**
STRENGTH THROUGH INNOVATION

Intimidator Doors are manufactured in the UK by CGT Security Ltd



v01_03-24

Curved Laths



Curved laths ensure a more 'intelligent' shutter roll, reducing space requirement

PVC Lip



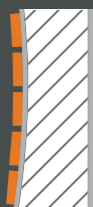
Soft PVC lip between laths for greater insulation and prevents rain seepage through join

Quirk



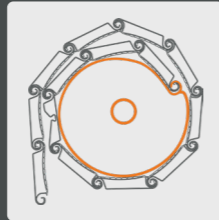
Patented thermal break technology removes the cold bridge through the lath join. No metal-on-metal contact.

Ribbed PVC Profile



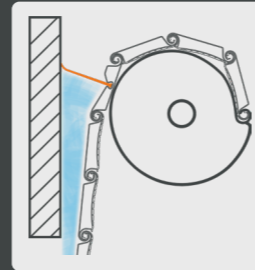
Soft PVC finish on curtain wall for quiet rolling, even at high speeds

Optimised Tube



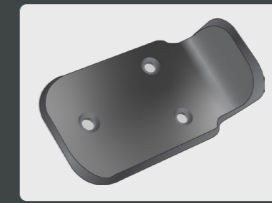
Patented optimised tube shape for smoother, faster roll operation.

Rubber Seal



Integral rubber seal between door & substrate for reduction of cold airflow

Fully Retained Door Leaf



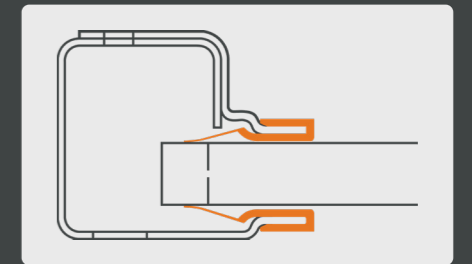
Multiple end retentions lock the curtain into the guide to give high wind resistance

End Locks



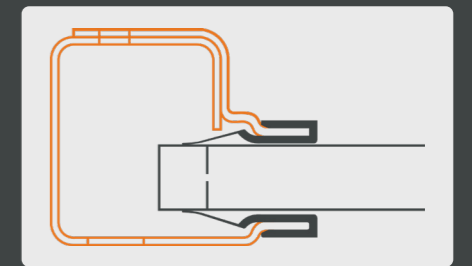
Nylon end locks for smooth and quiet operation

Brush Side Seals



Internal brush side seals for additional thermal protection.

Reinforced Guide Rails



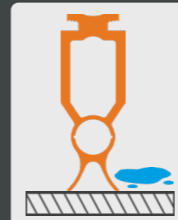
Two-part guide rail gives reinforcement for high wind-loading and gives extra strength on attack face

Foam Core



Twin material profile with high density foam for optimum insulation

Weather Seal



Shaped weather seal to hold safety edge and prevent water ingress

IR-X DATA SHEET

INTIMIDATOR®

HIGH PERFORMANCE INDUSTRIAL DOORS

A1 (SR1)

B3 (SR2)

LPS 1175 CERTIFIED INDUSTRIAL DOORS

PRODUCT REFERENCE

- Intimidator IR-X Industrial Door

APPROVED DIMENSIONS

- Maximum width: 6000mm
- Maximum height: 6000mm

SHUTTER CURTAIN

- Double wall - aluminium outer, soft ribbed PVC with thermal break joint as inner wall
- High density foam insulation infill

OPTIONS

- Acoustic upgrade to achieve 30dB
- Polyester powder coated to any standard RAL/BS colour (aluminium wall only)
- Manual or auto locking
- High duty cycle motors
- Safety edge, light curtains or laser detectors for safety on close

THERMAL PERFORMANCE

U Values (W/m ² K)	Typical Insulated Shutter	Intimidator IR-X
Through lath value	4.01 W/m ² K	1.22W/m ² K
Through curtain panel value	4.3 W/m ² K	2.8 W/m ² K



FRAMES/GUIDES

- Two-part galvanised steel guide with brush seals

APPROVED SUBSTRATES

- 3mm Steel
- Brickwork
- Blockwork
- Concrete
- Sub-assembly steel framework

OPERATION

- Hold-to-run operation
- Automatic operation

BOTTOM RAIL

- Reinforced extruded aluminium
- Weather seal